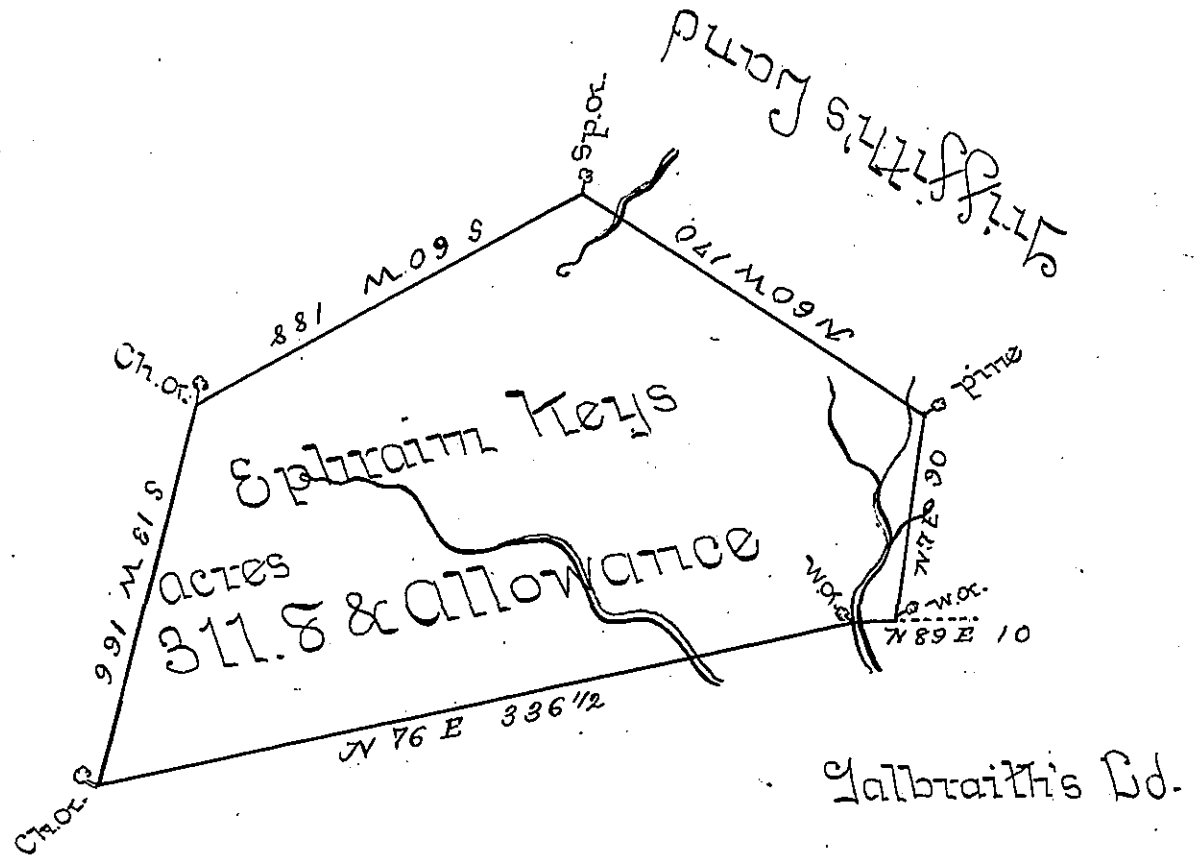


Courses & Distances

- S 89 E 10
- N 7 E 90
- N 60 W 170
- S 60 W 188
- S 13 W 166
- N 76 E 336 1/2



Draught of a tract of land situate in Greenwood Township Cumberland County containing Three hundred & eleven Acres & eight tenths & the unusual allowance of six P. Cent. for roads &c^a surveyed for Ephraim Keys May the 6th 1785 in pursuance of a Warrant from His Excellency the President of the Supreme executive Council. dated at Philad^a March 14th 1785 —

To John Lukens Esq^r
Surveyor General

Ja^s Harris D.S.

IN TESTIMONY that the above is a copy of the original remaining on file in the Department of Internal Affairs of Pennsylvania, made conformably to an Act of Assembly approved the 16th day of February, 1833, I have hereunto set my Hand and caused the Seal of said Department to be affixed at Harrisburg, this

8th day of October 1897.

James W. Fatta
Secretary of Internal Affairs.